

Solidarity Update

A publication of the Alaska State
Employees Association AFSCME Local 52, AFL-CIO



End Of Year

2014

2014: Two Key Elections Close and Pivotal

When all the 285,449 votes were finally counted in all 441 precincts across Alaska, the race for Governor ended in an extremely slim margin. With a voter turnout of slightly over 56%, the unity team of Bill Walker and Byron Mallott emerged victorious in a hotly contested election. A slim margin of just over 6,000 votes separated the contestants. Neither team received 50% of the vote.

Statewide Registered Voters: 509011 - Cards Cast: 285449 (56.08%)

Walker/Mallott – 134,658 – 48.10%

Parnell/Sullivan – 128,435 – 45.88%

6,223 vote margin

In a bellwether election for union rights and collective bargaining, the long-fought AO37 ordinance vote in Anchorage was rejected by local voters. The measure pertained strictly to municipal employees in Anchorage. Its potentially dire future ramifications for unions if enacted as a statewide model brought Anchorage public employee union members and their private sector counterparts out to the polls in big numbers. Presented to voters as MOA Proposition #1, the outcome of the measure was rejected by a larger margin by number of votes than the margin of victory in the statewide Governor's contest.

NO - 58,029 – 53.89%

YES - 49,643 – 46.11%

8,386 vote margin

<http://www.elections.alaska.gov/results/14GENR/data/results.htm>

Our ASEA volunteer members' presence at rallies, canvassing and phone banking and our presence at the polls helped greatly in making these two important elections end in favorable outcomes.



What You'll Find in this Issue

COVER

- ♦ 2014: Two Key Elections Close & Pivotal

- ♦ Famous Words of Solidarity

Page 2

- ♦ Did You Know ?

- ♦ ASEA/AFSCME Scholarships, College Planning, & Chapter Scholarships Available

Page 3

- ♦ ASEA Health Trust News
Now You Can Be "Healthier At Home"

- ♦ Legislature 2015 Preview

- ♦ Coming To Your Mailbox Soon!

Page 4

- ♦ ASEA/AFSCME Scholarships, College Planning, & Chapter Scholarships Available (Continued from page 2)

- ♦ Midnight Sun Chapter Holiday Food / Gift Drive

Page 5

- ♦ Walker / Mallott Reflect A Uniquely Alaskan Approach

Page 6

- ♦ 2014 A Year In Pictures

Famous Words of Solidarity

A just wage for the worker is the ultimate test of whether any economic system is functioning justly. - Pope John Paul II

(From Great Labor Quotations

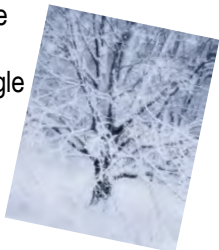
Sourcebook and Reader Peter Bollen

Solidarity Update

Did You Know?

Did You Know That:

It is estimated that the single "White Christmas" by Irving Berlin is the best selling single of all time, with over 100 million sales worldwide.



Did You Know That:

Hanukkah is celebrated for 8 days and nights, and it falls on a different day each year, anywhere from Nov. to early Jan.



Did You Know That:

Christmas wasn't declared an official holiday in the United States until June 26, 1870.



Did You Know That:

The name Kwanzaa is derived from the phrase "matunda ya kwanza" which means "first fruits" in Swahili



AFSCME Scholarships, College Planning Center & Chapter Scholarships Available

AFSCME / Union Plus have a variety of scholarships available for their union members. There are three with deadlines fast approaching, two are AFSCME and one is from Union Plus. All three applications MUST BE COMPLETED ONLINE.

AFSCME Family Scholarship: Deadline Wednesday, December 31, 2014

\$2,000 Scholarship for up to four years for any field of study. Download an application at: afscme.org/family.

To be eligible the applicant must:

- >Be a graduating high school senior whose parent, legal guardian or financially responsible grandparent is a full dues-paying AFSCME member
- >At the time the scholarship is awarded, be enrolled in a full-time degree program either at an accredited four-year institution or at a two-year institution that will transfer credits to a four-year institution
- >Have taken the SAT or the ACT

Gerald W. McEntee Scholarship: Deadline Saturday, January 31, 2015

A \$5,000 one-time scholarship for members only. (Members must apply for the Union Plus scholarship in order to apply for the McEntee Scholarship.) After completing the Union Plus scholarship, members will be asked if they are AFSCME members and if they click yes they will be asked to write a 500 word essay in order to apply for the McEntee scholarship. For more detailed information go to <http://afscmelocal52.org/mcentee-scholarship>.

Union Plus Scholarship: Deadline is Saturday, January 31, 2015

\$500 - \$4,000 scholarship depending on merit of application. This is a competitive scholarship. Applicants are evaluated according to academic ability, social awareness, financial need and appreciation of labor. A GPA of 3.0 or higher is recommended. A required essay can account for up to half your total points. For more information go to: <http://afscmelocal52.org/unionpluscollege>

Union Plus College Planning Center

The "Union Plus College Planning Center" <http://www.unionplus.org/college-education-financing/princeton-review-test-prep-courses> to find some of the following information on college preparation: Prep for Your Test, FREE online practice tests for GMAT, GRE, LSAT, MCAT, USMLE, SAT, or ACT, Explore Colleges, Career Profile, Start Your Action Plan, Deciding & Applying, Explore Grad School, Law School, Medical School and save 15% to 60% on college test prep courses.

Check with your local chapter to see if they have a scholarship program. Two of ASEA's chapters have scholarship applications available for their members.

Anchorage Chapter

The Anchorage Chapter Scholarship Committee's 2015 Scholarship and Tuition Reimbursement Program is offering scholarships to members in good standing **and** to dependents of members along with tuition reimbursements to members in good standing. This program enhances the educational benefits for Anchorage chapter members and their dependents. **One important requirement for members to obtain scholarships or tuition reimbursement is to attend a minimum of three (3) Anchorage general chapter meetings.**

Anchorage Chapter Scholarship and Tuition Reimbursement FAQs and applications can be downloaded at: <http://www.anchorage52.net/Committees/ScholarshipCommittee/tabid/2973/Default.aspx>.

Juneau Chapter

ASEA/AFSCME Local 52 Juneau Chapter is offering **ten scholarships** for the 2015/2016 academic year for applicants who have not previously received a scholarship from the Juneau Chapter.

The deadline for scholarship applications to be received or postmarked for the ten scholarships offered by the Chapter is March 15, 2015.

(Continued on page 4)

Solidarity Update

ASEA HEALTH TRUST NEWS



Now You Can Be "Healthier at Home"

VALUABLE RESOURCE HELPS YOU BE A WISE HEALTH CARE CONSUMER

Good health starts at home. That's where most of us make the lifestyle and health care decisions that ultimately have the biggest impact on our health.

The ASEA Health Benefits Trust is helping you make good health care decisions by putting a valuable resource in your hands. Last summer all Health Trust members were sent *Healthier at Home*, a guide that gives you solid, reliable health information you can trust. You'll find practical advice to help you make decisions about nearly any health issue you and your family face. Please keep *Healthier at Home* in a convenient place and refer to it whenever you or your family have a health concern. Or you can access the online version at http://healthylife.com/online/HealthierAtHome/ASEA/HealthierAtHome_Home.html.

Here are some ways you can make the most of this guide:

- ◆ **When you have a common health problem**, such as an earache or sore throat, use it as a resource to find out what to do.
- ◆ **Find effective self-care solutions** that can help you quickly feel better.
- ◆ **Be informed about health conditions.**
- ◆ **Find tips for getting good medical care.**

Please discuss any serious health concerns with a medical professional.

Legislature 2015 Preview

Majority and minority organizations within the Alaska Legislature's Senate and State House have announced their membership and respective leadership positions.

Most legislative races were settled following the General Election on Nov. 4 except for a trio of House seats.

Sitting Senators, successful Senate incumbents and newcomers Mia Costello and Bill Stolze (both from the State House) quickly organized themselves for the upcoming legislative session and an announcement was made a few days later.

Sen. Kevin Meyer was elected Senate President and Sen. John Coghill will continue as Majority Leader. The influential Rules Committee Chair will be held by outgoing Senate President Charlie Huggins.

Sens. Anna Fairclough and Pete Kelly will serve as Senate Finance Committee Co-Chairs, Sen. Lesil McGuire will chair the Senate Judiciary Committee and Sen. Bill Stoltze, will chair the Senate State Affairs Committee.

Sen. Bert Stedman will chair the Senate Health and Social Services Committee and Sen. Click Bishop will chair the Senate Community and Regional Affairs Committee. Sen. Mike Dunleavy will serve as Senate Education Committee Chair and Sen. Cathy Giessel will continue serving as Senate Resources Chair.

The Senate majority organization will be made up of fifteen senators and is nearly identical to the past Legislature's majority even after three Democratic senators traded caucuses. The Republican-led majority welcomed Sen. Lyman Hoffman and Sens. Donald Olson and Dennis Egan aligned themselves with the Democratic-led minority.

The Senate minority counts five members in its caucus, the minimum under uniform rules for a recognized minority.

Recent certification of the narrowest legislative races clarified a membership in the State House organizations, already heavily weighted in favor of the Republican-led majority. Incumbent Rep. Gabrielle LeDoux rejoined the majority and fresh faces Matt Claman and Dan Ortiz survived close State House races to join the Democratic-led minority.

Despite a handful of close races, House leadership was established within days of the election. Rep. Mike Chenault was reelected as Speaker of the House for the upcoming session, his fourth term in the position. Rep. Charisse Millett will serve as Majority Leader and Bob Herron will serve as Majority Whip.

Rep. Craig Johnson will continue as Chair of the House Rules Committee Chair and Reps. Mark Neuman and Steve Thompson will Co-Chair the House Finance Committee.

The State House majority organization has 27 representatives in its caucus while the minority counts 13 among its members, a slight gain for the Democratic caucus over recent years.

Rep. Chris Tuck will continue as Minority Leader and the caucus announced committee assignments for its members including Reps. Tuck and Jonathan Kreiss-Tomkins on the House Rules Committee, Reps. Claman and Max Gruenberg on the House Judiciary Committee, and Reps. Andy Josephson and Sam Kito III on the House Labor and Commerce Committee.

The first session of the 29th Alaska Legislature begins in Juneau on Jan. 20, 2015 and adjourns 90 days later on April 19.

Coming To Your Mailbox Soon

Be on the lookout for the Notice of Nominations coming in your mail!

Important Election Dates:

December, 10, 2014 - Notice of Nominations mailed to members

January 20, 2015 NOON - Deadline for receipt of Nomination Forms, Constitutional Amendments and Official Candidate

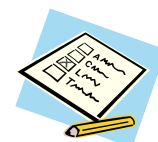
Statement Forms

February 13, 2015 - Ballots Mailed to members

March 19, 2015 - ELECTION DATE

April 2, 2015 - Officer Run-off election ballots mailed out, (if needed)

May 4, 2015 - Run - off election Date (if needed)



Solidarity Update

AFSCME Scholarships, College Planning Center & Chapter Scholarships Available

(Continued from page 2)

Application forms are available from the links below.

The scholarships are:

1. Four \$2,000 scholarships (to be split between terms) for a child of a Juneau Chapter member (in good standing) enrolled full-time or half-time in a 4-year degree program at an accredited university.
2. Four \$2,000 scholarships (to be split between terms) for a Juneau Chapter member (in good standing) enrolled full-time or half-time in a 4-year degree program at an accredited university.
3. Two \$2,000 scholarship (to be split between terms) for a Juneau Chapter member or a child of a Juneau Chapter member, (in good standing) enrolled full-time in a trade/vocational studies program at an accredited institution.

Instructions:

To apply for one of these scholarships, submit the application form (see links below) along with a letter of reference, high school/college/trade school grade transcripts, SAT and/or ACT scores (if applicable), and an original essay outlining: previous accomplishments, academic achievement, extra-curricular activities, community service, employment history, future plans, education or training sought, post education hopes or ambitions, etc. Only one letter of reference is needed.

Application form in PDF format is available at http://www.afscmelocal52.org/asea-files/juneau_scholarship_app15.pdf

Application form in MS WORD format is available at http://www.afscmelocal52.org/asea-files/juneau_scholarship_app15.doc

All applicants should mail the application to:

ASEA/AFSCME Local 52 Juneau Chapter Scholarship Fund
PO Box 20009
Juneau, AK 99802

Midnight Sun Chapter Holiday Food/Gift Drive

The Midnight Sun Chapter is having a food/gift drive from December 5th to December 12th to help fill the urgent need that has come about because the Santa Clearing House is not operating this year. A new group, Santa's Helpers, has stepped up to take over and the Chapter is stepping up to help them.

Santa's Helpers would like to make sure families and agencies in need can still get a helping hand for the holidays. They are working with Love, INC, the Food Bank and the Salvation Army to make sure families know where they can turn. Love, INC has offered the space for us to collect and package gifts for people of all ages and families of all sizes. The Food Bank has offered their facility and a helping hand to get the groceries out. The Salvation Army has decided to take on some extra families this season.

There are still families, seniors and children that need the community support and would go hungry or have a very sad holiday season without food, gifts or monetary donations. Santa's Helpers believe that generosity should continue to help support families in need for many more years to come.

Santa's Helpers believe that the generosity that Santa Clearing House started should continue to help support families in need. All cash, checks and toy donations can be taken to Love, INC. Any checks should be made out to Love, INC and in the memo space write for "Santa's Helpers". During this transitional year any food donations can go to the Food Bank. We are hoping to help about 300 families this year and afterward would like to reflect on what we can do next year to continue this effort. - Bill Hunt, Midnight Sun Chapter President

Items that are needed for each box are:

5lb Sugar	Pancake Mix	Eggs	2 Cans Tomatoes	Spaghetti Noodles
5lb Flour	Peanut Butter	Bread	Butter	Oatmeal
Spaghetti Sauce	Bag of Rice	Onions	Potatoes	Syrup
Macaroni Noodles	Applesauce	Milk	Apple Juice	Stuffing
2 Cans Green Beans	Bag of Beans	Block of Cheese	2 Cans of Corn	



Solidarity Update

Walker / Mallott Reflect A Uniquely Alaskan Approach

Alaska Gov. Bill Walker and Lt. Gov. Byron Mallott received the oath of office on Dec. 1 after winning a narrow gubernatorial race over incumbent Gov. Sean Parnell and running mate Dan Sullivan.

The Walker Administration is quickly taking shape as departmental and advisory appointments are made and steps are taken to fulfill statutory obligations of the executive branch.

Gov. Walker has also signaled changes in policy from the outgoing administration, notably the expansion of Medicaid opposed by Parnell, as well as a mounting fiscal austerity in light of record low oil prices and slumping state revenue.

During his inaugural address, Walker spoke of how his personal experiences were shaped by the challenges and prosperity found in Alaska—even before statehood. “Working as a laborer, teamster and journeyman carpenter on the construction of the Trans-Alaska pipeline put me through college,” he said. “It also led me to Donna, my brilliant, hardworking, wonderful wife; the smartest person I know.”

On the topic of family, his support for Medicaid expansion was clear. “... for far too long, too many Alaskans have gone without health care. When one person is sick and doesn't get medical attention, the entire family suffers.”

Walker went on to say he'll work to increase confidence in the office of Governor. “My administration will work to restore some of the faith and trust that has been lost,” Walker said. “I vow to you that you will have an open and transparent government.”

The new administration's current cabinet includes several acting commissioners as well as a handful of permanent appointments. Walker selected Valerie Davidson to head the Department of Health and Social Services, the state's largest department and host to the Medicaid expansion program.

The acting commissioner for the Dept. of Administration is Amy Erickson (former director of the Division of Motor Vehicles) and the acting commissioner of the Dept. of Labor and Workforce Development is Grey Mitchell (veteran of the department and most recently deputy commissioner).

Constrained by a Dec. 15 deadline, Gov. Walker has accepted the previous administration's budget and will submit it to the Alaska Legislature without endorsement. Budget discussions are certain to evolve.

Oil revenue to the state is down after months of declining oil prices and the Walker/Mallott transition team has been active in identifying areas for reduced spending in what is shaping up to be a very lean budget year.

The Walker/Mallott Unity Ticket reflected a uniquely Alaskan approach to the challenge to winning the race for Governor. The unified campaign of two qualified, experienced and respected candidates for Governor required the consent of their respective running mates and immediately faced a court challenge.

When each of the 285,449 ballots were counted in all 441 precincts across Alaska, the race for Governor ended in a narrow decision. With a voter turnout of slightly over 56%, Bill Walker and Byron Mallott had outpolled the incumbent Governor by more than 6,000 votes.



*Happy
New
Year!*



*Welcome
To
2015!*

Solidarity Update

2014 A Year In Pictures

